

# SCHOOL OF ARCHITECTURE

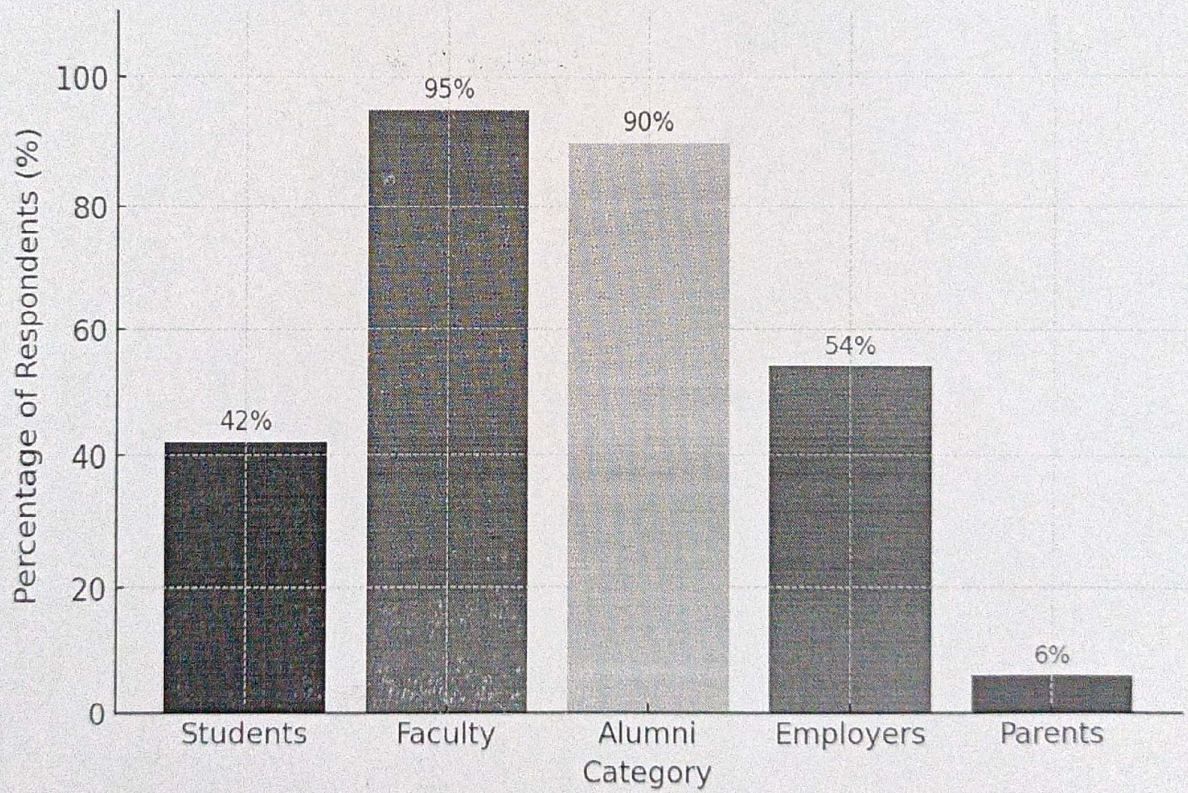
## Action Plan on Feedback received (2024-25)

*[Handwritten signature]*





## Feedback Analysis (2024-25)



*[Handwritten Signature]*





### Feedback received from students

Sl No.	Feedback Received	Action Plan
1	65% Students strongly agreed that the curriculum introduced emerging topics in the subject area.	<ul style="list-style-type: none"> <li>• Introduce electives and modules on AI in architecture, parametric design, net-zero buildings, and smart cities.</li> <li>• Increase Industry and Research Collaborations by Organizing expert talks, panel discussions, and workshops featuring professionals working on emerging trends.</li> </ul>
2	60% students felt that their critical and analytical thinking skills have been enhanced through the curriculum.	<ul style="list-style-type: none"> <li>• Integrate emerging topics and technologies to ensure the curriculum stays relevant and forward-thinking.</li> <li>• Enhance practical learning experiences through workshops, field studies, and case-based assignments.</li> </ul>
3	68% students felt that the curriculum oriented them towards pursuing a higher education.	<ul style="list-style-type: none"> <li>• Incorporate opportunities for students to engage in academic conferences, workshops, and collaborations with research institutions.</li> <li>• Align the curriculum to align with global trends and emerging fields of study, fostering a culture of lifelong learning.</li> </ul>
4	68% students responded strongly that The curriculum sensitizes them towards environmental and social aspects.	<ul style="list-style-type: none"> <li>• Course content to include more case studies and examples that highlight sustainability and social responsibility.</li> <li>• Organize workshops and field projects that actively involve students in environmental and social initiatives.</li> </ul>
5	More than two third of the respondents agreed that employability is given importance in the curriculum.	<ul style="list-style-type: none"> <li>• Collaborate with industry professionals to regularly update the curriculum with relevant skills and knowledge for the job market.</li> <li>• Incorporate internships, live projects, and industry visits to provide students with hands-on experience.</li> <li>• Offer workshops on soft skills, interview techniques, and resume building to enhance students' employability.</li> </ul>
6	68% respondents strongly agreed that the curriculum has enhanced their	<ul style="list-style-type: none"> <li>• Encourage independent research projects, thesis writing, and participation in</li> </ul>

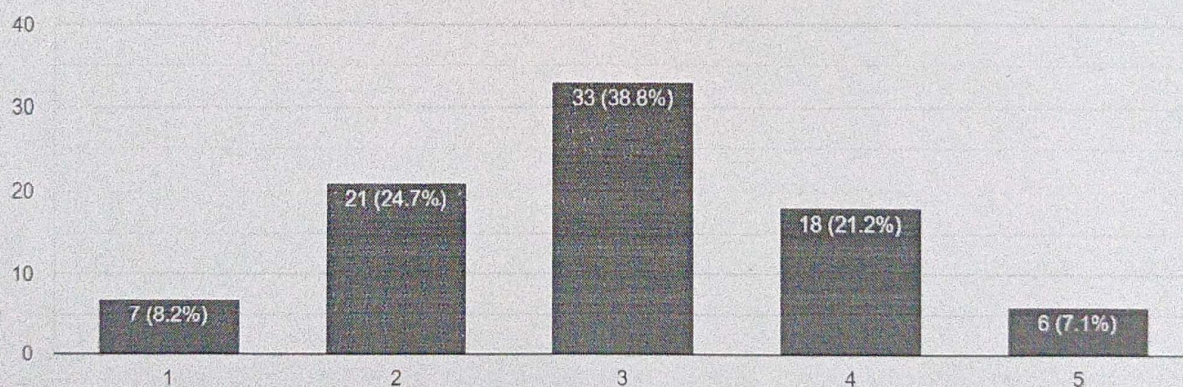




	research aptitude and skills.	academic conferences to foster critical thinking. <ul style="list-style-type: none"><li>• Organize workshops and seminars with researchers and industry experts to expose students to diverse research perspectives and approaches.</li></ul>
7	92% of first year students agreed that they have been introduced to digital tools in the revised curriculum.	<ul style="list-style-type: none"><li>• Continuously update the digital tools curriculum to include emerging technologies and software relevant to the field of study.</li><li>• Provide hands-on training and workshops for students to deepen their practical knowledge of these tools.</li><li>• Collaborate with tech companies and industry experts to keep students up-to-date with the latest trends and tools in the digital space.</li></ul>

The curriculum satisfies the objectives and learning outcomes.

85 responses



*[Handwritten signature]*



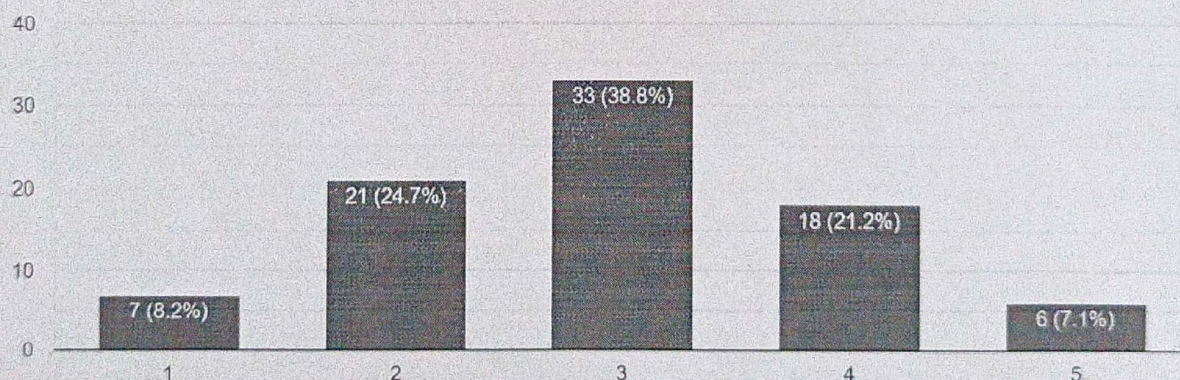




	research aptitude and skills.	academic conferences to foster critical thinking. <ul style="list-style-type: none"><li>• Organize workshops and seminars with researchers and industry experts to expose students to diverse research perspectives and approaches.</li></ul>
7	92% of first year students agreed that they have been introduced to digital tools in the revised curriculum.	<ul style="list-style-type: none"><li>• Continuously update the digital tools curriculum to include emerging technologies and software relevant to the field of study.</li><li>• Provide hands-on training and workshops for students to deepen their practical knowledge of these tools.</li><li>• Collaborate with tech companies and industry experts to keep students up-to-date with the latest trends and tools in the digital space.</li></ul>

The curriculum satisfies the objectives and learning outcomes.

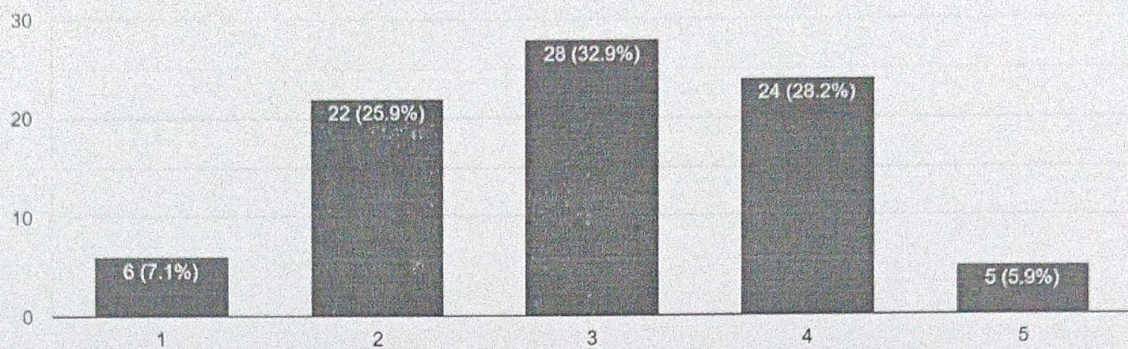
85 responses





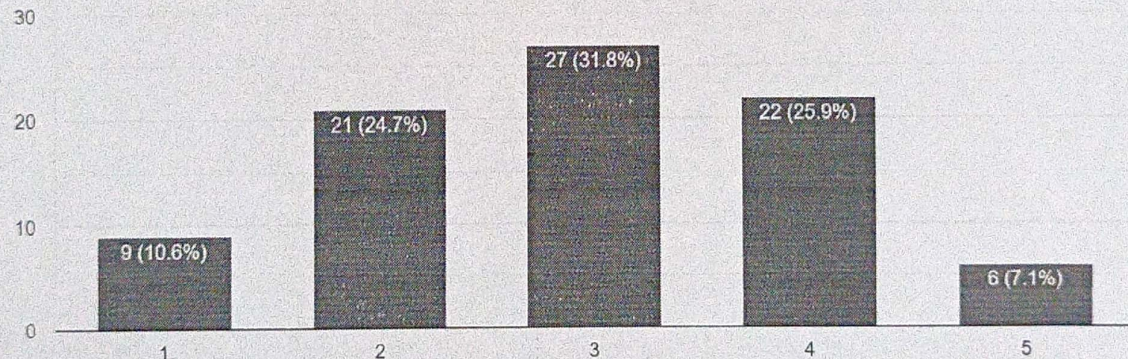
The curriculum requires that I be introduced to emerging topics in the subject area.

85 responses



The curriculum orients me towards pursuing a higher education.

85 responses



*[Handwritten signature]*





### Feedback received from Faculty

Sl No.	Feedback Received	Action Plan
1	Feedback indicated a strong alignment of curriculum to fulfill the stated program objectives and learning outcomes.	<ul style="list-style-type: none"> <li>• Conduct focused discussions with faculty to identify specific areas needing improvement in aligning curriculum with stated learning outcomes.</li> <li>• Review course content to ensure each module explicitly contributes to program objectives.</li> <li>• Organize curriculum enhancement workshops for faculty to align teaching strategies with program learning outcomes.</li> </ul>
2	Even though most respondents agreed that the curriculum adequately covers foundational and advanced topics necessary for the students, there were a few concerns raised.	<ul style="list-style-type: none"> <li>• Conduct detailed faculty discussions to pinpoint specific topics that may need reinforcement or expansion.</li> <li>• Review course content to ensure a balanced mix of foundational and advanced topics with clear progression across semesters.</li> <li>• Introduce more elective courses in emerging areas of architecture and urban planning.</li> </ul>
3	75% of faculty responded that the courses prepare students for the latest industry trends and challenges in architecture and design.	<ul style="list-style-type: none"> <li>• Expand industry partnerships for internships, live projects, and mentorship programs.</li> <li>• Increase guest lectures and workshops by professionals on emerging trends in architecture and design. Integrate AI, BIM, parametric design, and sustainability-focused software into coursework.</li> <li>• Ensure faculty training on the latest industry tools to enhance technology-driven learning.</li> <li>• Promote Studio on Wheels, site visits, and hands-on projects in live urban contexts.</li> </ul>
4	75% responded strongly that the curriculum is effective in developing independent thinking.	<ul style="list-style-type: none"> <li>• Integrate more research assignments, design critiques, and self-guided projects to foster critical thinking.</li> </ul>

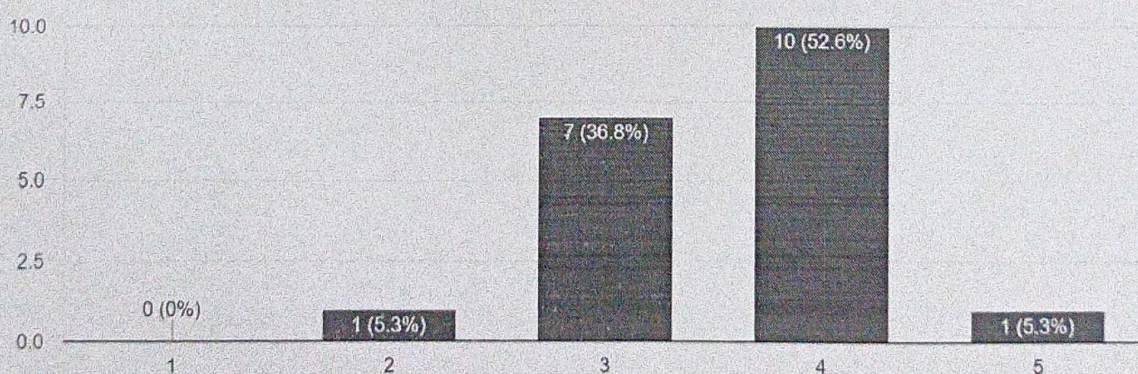




		<ul style="list-style-type: none"><li>• Incorporate Open-Ended Design Challenges - Introduce problem-solving studio projects where students explore diverse approaches and solutions.</li></ul>
5	87.5% of respondents agreed that Employability is given importance in the curriculum.	<ul style="list-style-type: none"><li>• Enhance Industry Integration - Expand internships, live projects, and collaborations with architectural firms to provide hands-on industry exposure.</li><li>• Give impetus to skill based learning. Incorporate certification courses, software training (BIM, AI in design), and workshops to align with industry demands.</li></ul>
6	Faculty suggested the following recommendations to improve the promotion of self-study and research components.	<ul style="list-style-type: none"><li>• Keep self study as 4hours per week, 25-26 hours/week as the regular contact hours</li><li>• Saturday to be dedicated to self study and research day with monitoring. Where students can explore their deeper interest in architecture or related subjects or topics.</li></ul>

To what extent does the current curriculum align with and fulfill the stated program objectives and learning outcomes?"

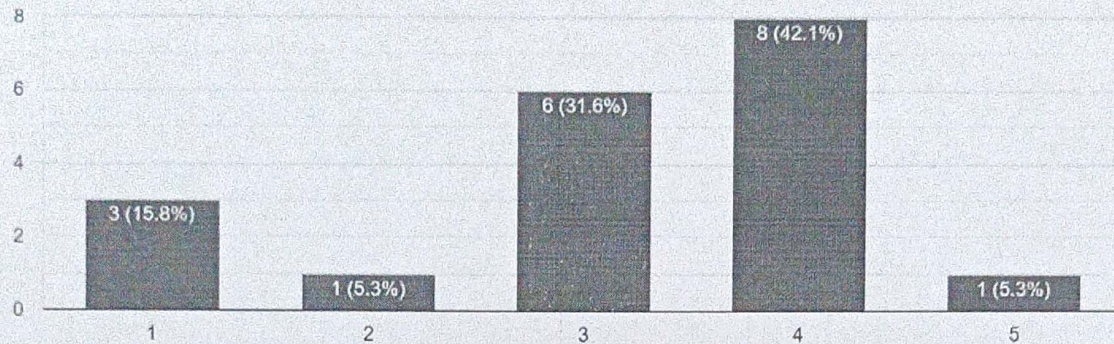
19 responses





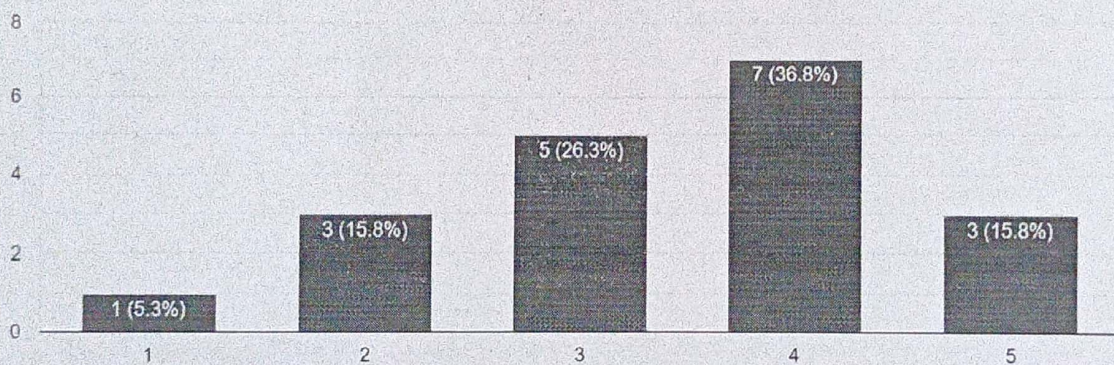
Does the curriculum adequately cover foundational and advanced topics necessary for the students?

19 responses



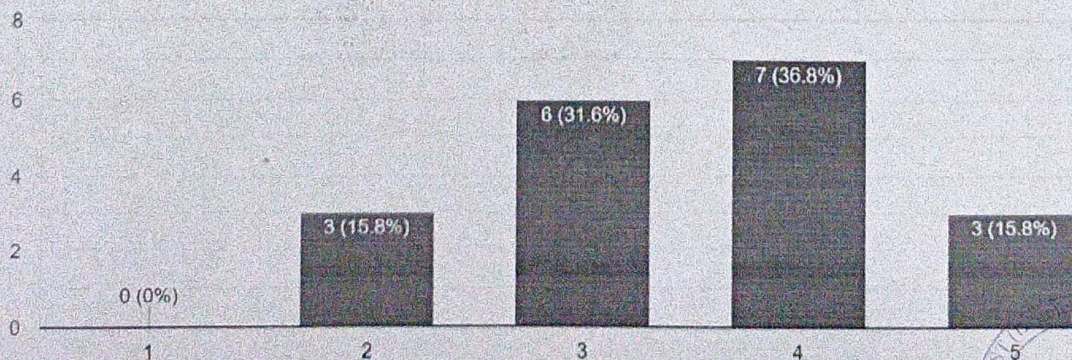
To what extent does the curriculum demand research inclusive teaching of the teacher?

19 responses



To what extent was your course integrated with the other courses offered in the semester?

19 responses





### Feedback received from Parents

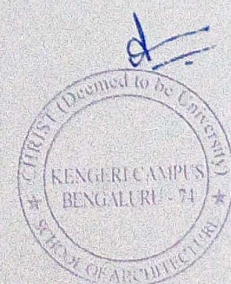
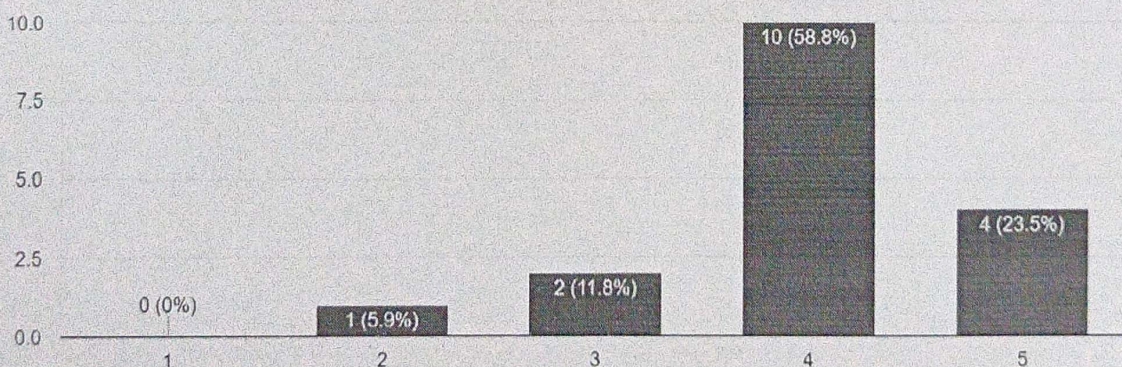
Sl No.	Feedback Received	Action Plan
1	More than 90% strongly agreed that the curriculum oriented their wards towards higher education	<ul style="list-style-type: none"> <li>• Incorporate opportunities for students to engage in academic conferences, workshops, and collaborations with research institutions.</li> <li>• Align the curriculum to align with global trends and emerging fields of study, fostering a culture of lifelong learning.</li> </ul>
2	More than 80% parents agreed that Employability is given importance in the curriculum	<ul style="list-style-type: none"> <li>• Conduct detailed faculty discussions to pinpoint specific topics that may need reinforcement or expansion.</li> <li>• Review course content to ensure a balanced mix of foundational and advanced topics with clear progression across semesters.</li> <li>• Introduce more elective courses in emerging areas of architecture and urban planning.</li> </ul>
3	All respondents agreed that the curriculum encourages their ward in serving society.	<ul style="list-style-type: none"> <li>• Integrate community service projects and social impact initiatives into the curriculum to provide students with real-world opportunities to serve society.</li> <li>• Encourage collaboration with NGOs, local governments, and social enterprises to expose students to various societal needs.</li> <li>• Promote awareness campaigns on critical societal issues and encourage students to participate in volunteer work, fostering a sense of civic duty.</li> </ul>
4	More than 90% responded strongly that the curriculum oriented their ward towards research	<ul style="list-style-type: none"> <li>• Encourage independent research projects, thesis writing, and participation in academic conferences to foster critical thinking.</li> <li>• Organize workshops and seminars with researchers and industry experts to expose students to diverse research perspectives and approaches.</li> </ul>
5	All respondents agreed the curriculum	<ul style="list-style-type: none"> <li>• Extracurricular activities such as public</li> </ul>



	helps their ward to enhance their personality.	<p>speaking, debate clubs, and leadership workshops to nurture confidence and self-awareness.</p> <ul style="list-style-type: none"> <li>• Encourage participation in cultural, sports, and volunteer programs to build well-rounded individuals.</li> </ul>
6	Though most parents were happy with the curriculum, suggestions were given to include aspects such as construction process and management, which includes management principles, legal frameworks, health and safety, environment responsive design etc in the curriculum.	<ul style="list-style-type: none"> <li>• Introduce dedicated modules on construction management principles, legal frameworks, and industry standards to provide students with practical knowledge.</li> <li>• Include courses on health, safety, and regulatory compliance within the construction process, ensuring students understand industry requirements.</li> <li>• Develop a segment on environmentally responsive design, integrating sustainable practices and green building certifications.</li> <li>• Organize workshops and guest lectures with industry experts to give students exposure to real-world construction management practices and trends.</li> </ul>

To what extent does the curriculum orient your ward towards higher education?

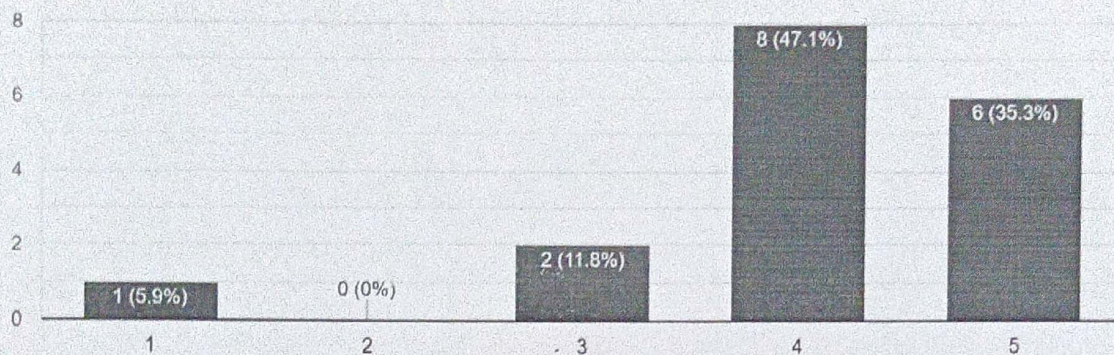
17 responses





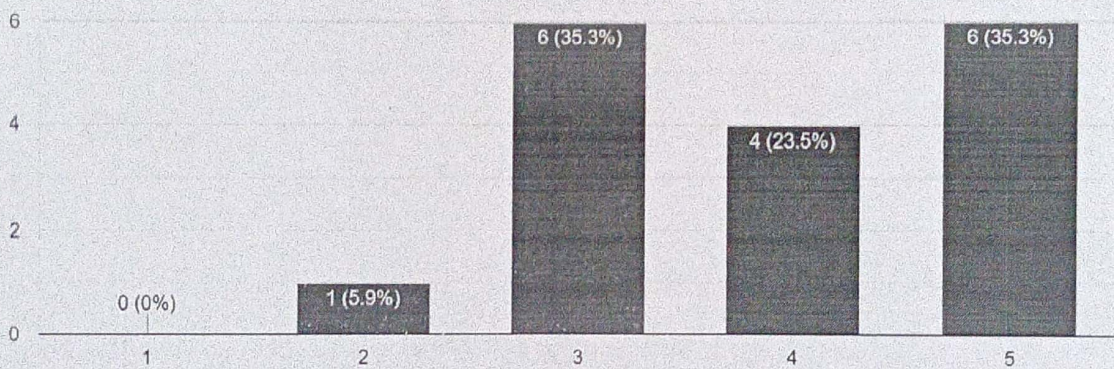
To what extent does the curriculum include components of Value Based Education?

17 responses



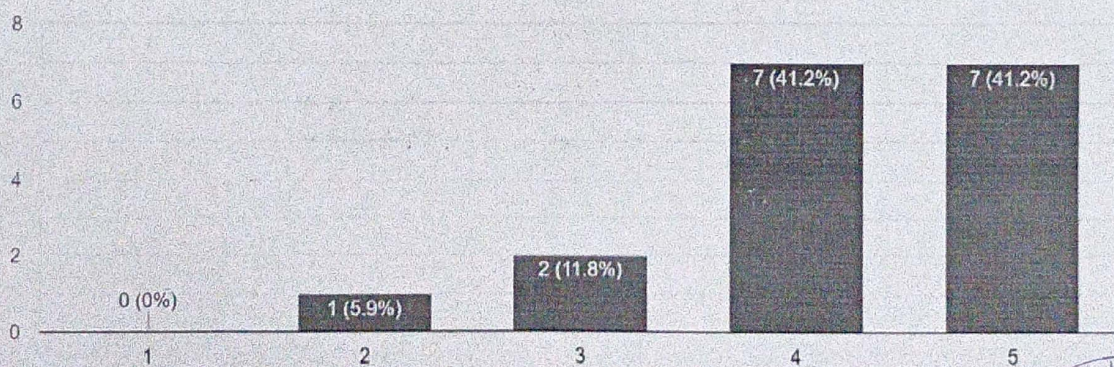
To what extent does the curriculum encourages your ward in serving society?

17 responses



To what extent does the curriculum help your ward to enhance their personality?

17 responses





### Feedback received from Alumni

Sl No.	Feedback Received	Action Plan
1	More than 75% alumni were happy with the Teaching & learning methods adopted.	<ul style="list-style-type: none"> <li>• Conduct regular alumni feedback sessions to understand which teaching methods were most effective and areas for improvement.</li> <li>• Continue to incorporate innovative teaching strategies like project-based learning, flipped classrooms, and digital tools to keep the learning experience dynamic.</li> <li>• Organize mentorship programs where alumni can contribute to refining teaching methods by sharing industry insights and best practices.</li> </ul>
2	68% strongly agreed that the overall quality of teaching and learning activities in the School was good.	<ul style="list-style-type: none"> <li>• professional development for faculty, encouraging participation in workshops and training on emerging pedagogical techniques and technologies.</li> <li>• Foster a collaborative teaching environment where faculty share best practices and innovative strategies to continuously improve the quality of education.</li> <li>• Ensure that curriculum updates are aligned with industry standards and academic advancements to maintain high educational standards.</li> </ul>
3	70% alumni strongly felt that the curriculum of the program is well designed and promotes the learning experience of the students.	<ul style="list-style-type: none"> <li>• Regular review and update of the curriculum to keep it aligned with current trends, industry needs, and evolving academic research.</li> <li>• Continue to integrate student-centered learning approaches, emphasizing hands-on experiences, critical thinking, and real-world applications.</li> </ul>
4	More than 80% strongly agreed that their ability to work well in cross-disciplinary teams and to be socially and environmentally conscious in the study of human habitat was	<ul style="list-style-type: none"> <li>• Expand interdisciplinary projects by integrating subjects like sustainability, urban planning, and social sciences to encourage holistic problem-solving.</li> <li>• Strengthen collaborations with</li> </ul>

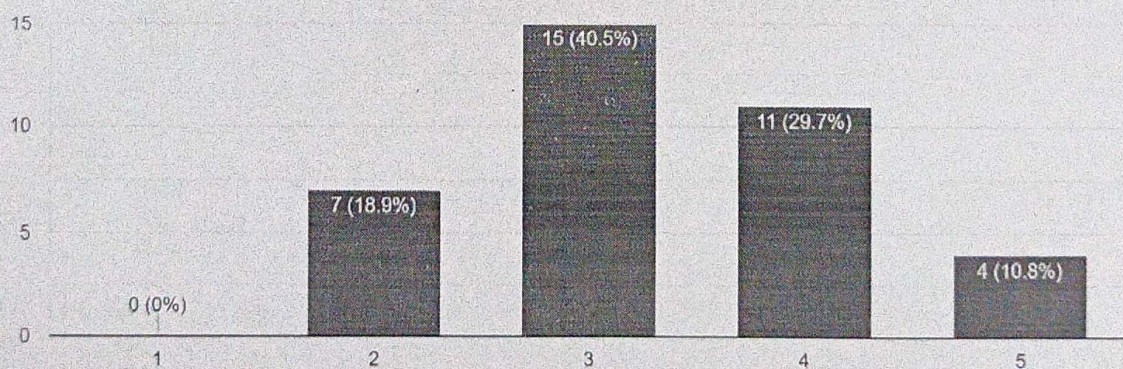




	enhanced.	<p>professionals from various disciplines through guest lectures, joint workshops, and industry-led projects.</p> <ul style="list-style-type: none"><li>• Enhance experiential learning through community engagement programs, environmental impact assessments, and real-world problem-solving exercises.</li></ul>
5	<p>More than 75% alumni strongly felt that their ability to use appropriate technology for designing built environments, and to think critically and assess existing environments. Ability to assume professional roles in architecture by offering sound knowledge in design theories and applications, building technology, social, cultural and environmental factors, and the application of information technology and interdisciplinary knowledge.</p>	<ul style="list-style-type: none"><li>• Enhance Technology Integration - Strengthen curriculum modules on digital tools, parametric design, and Building Information Modeling (BIM) to ensure students stay ahead in technological advancements.</li><li>• Increase Professional Readiness - Organize industry-oriented training, internships, and mentorship programs to bridge academic learning with real-world architectural practice.</li></ul>

PO1: Ability to work well in cross-disciplinary teams and to be socially and environmentally conscious in the study of human habitat.

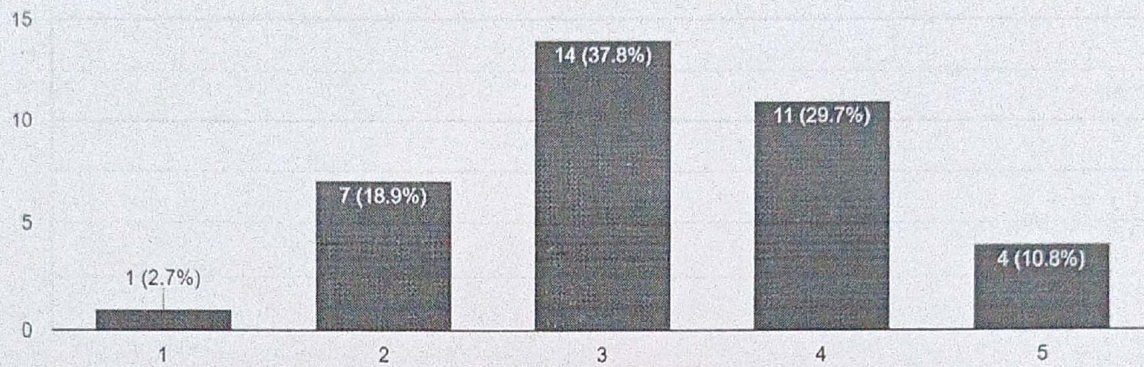
37 responses





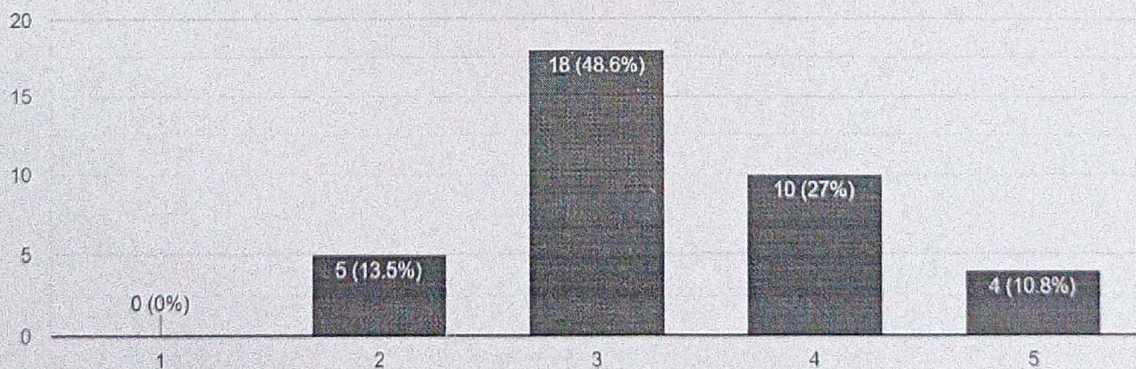
PO2: Acquired skills to engage into community outreach programs and apply ethical principles, uphold standards in architectural practice.

37 responses



PSO1: Ability to be socially and environmentally sensitive and to work effectively in multi-disciplinary teams within the building industry...lities and professional obligations in architecture.

37 responses





### Feedback received from Employers

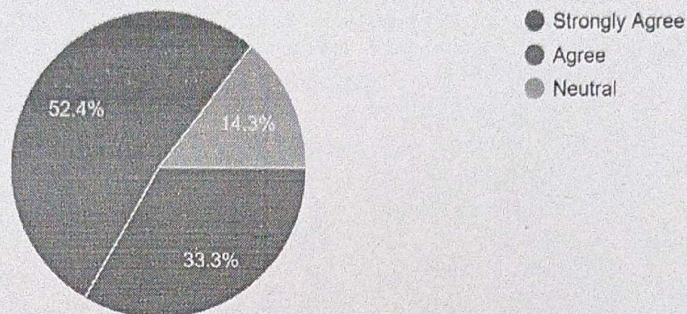
Sl No.	Feedback Received	Action Plan
1	More than 85% respondents strongly agreed that curriculum enhanced critical and innovative thinking.	<ul style="list-style-type: none"> <li>• Encourage students to tackle real-world challenges through creative solutions in studio projects and research work.</li> <li>• Provide opportunities for students to explore new materials, construction techniques, and digital fabrication methods.</li> <li>• Organize debates, design competitions, and interactive workshops to foster deeper analytical skills and encourage out-of-the-box thinking.</li> </ul>
2	More than 80% employers agreed that curriculum was relevant for employability.	<ul style="list-style-type: none"> <li>• Partner with firms and professionals to align coursework with current industry practices and emerging trends.</li> <li>• Introduce more internships, live projects, and hands-on skill development sessions to prepare students for real-world challenges.</li> <li>• Organize job fairs, mentorship programs, and resume-building workshops to better connect students with employment opportunities.</li> </ul>
3	Suggestions were given to bring in more practicing architects to interact and discuss with the students, to create more awareness among students regarding latest tools, trends in the industry, new technologies in use, etc.	<ul style="list-style-type: none"> <li>• Schedule regular sessions with practicing architects to discuss emerging trends, technologies, and real-world design challenges.</li> <li>• Organize skill-building workshops where professionals teach the latest design tools, software, and construction technologies.</li> <li>• Invite architects to participate in studio reviews and design critiques to provide practical insights and constructive feedback.</li> <li>• Establish mentorship programs and arrange site visits to ongoing architectural projects, giving students first hand exposure to contemporary practices.</li> </ul>
4	Respondents raised concern that more emphasis needs to be given on	<ul style="list-style-type: none"> <li>• Syllabus has been revised giving emphasis to building construction and</li> </ul>



	construction and Working Drawings.	working drawing <ul style="list-style-type: none"> <li>Organize regular site visits to under-construction projects where students can study working drawings and their on-site execution.</li> </ul>
--	------------------------------------	--

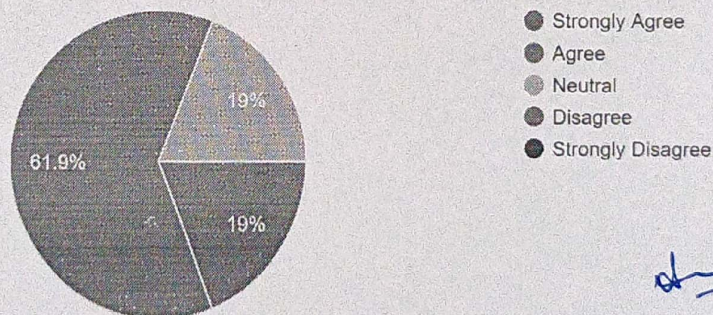
The curriculum is effective in developing critical and innovative thinking

21 responses



The syllabus was effective in developing skill oriented human resources

21 responses



*[Signature]*

